

# Human FGL2 Protein

Cat. No. FGL-HM212



## Description

<b>Source</b>	Recombinant Human FGL2 Protein is expressed from HEK293 with hFc tag and Flag tag at the N-Terminus. It contains Val205-Pro439.
<b>Accession</b>	Q14314
<b>Molecular Weight</b>	The protein has a predicted MW of 54.73 kDa. Due to glycosylation, the protein migrates to 60-70 kDa based on Bis-Tris PAGE result.
<b>Endotoxin</b>	Less than 1EU per µg by the LAL method.
<b>Purity</b>	> 90% as determined by Bis-Tris PAGE > 90% as determined by HPLC

## Formulation and Storage

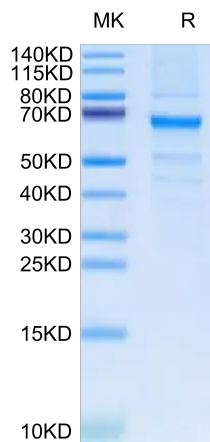
<b>Formulation</b>	Lyophilized from 0.22µm filtered solution in PBS, 200mM Arginine (pH 7.4). Normally 8% trehalose is added as protectant before lyophilization.
<b>Reconstitution</b>	Centrifuge the tube before opening. Reconstituting to a concentration more than 100 µg/ml is recommended. Dissolve the lyophilized protein in distilled water.
<b>Storage</b>	-20 to -80°C for 12 months as supplied from date of receipt. -80°C for 3 months after reconstitution. Recommend to aliquot the protein into smaller quantities for optimal storage. Please minimize freeze-thaw cycles.

## Background

Fibrinogen-like protein 2 (FGL2) is a member of the fibrinogen-like protein family and possesses important regulatory functions in both innate and adaptive immune responses. FGL2 is overexpressed in glioma, and its expression level is negatively associated with the prognosis of glioma patients.

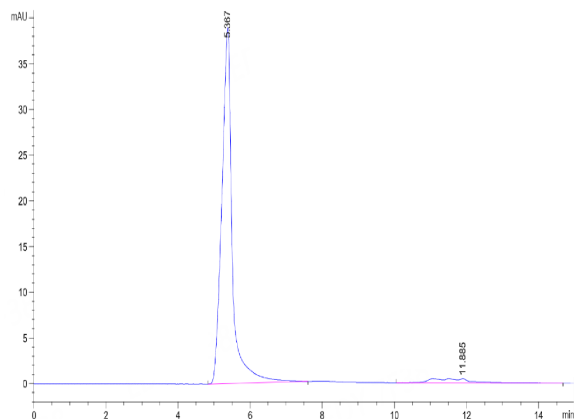
## Assay Data

### Bis-Tris PAGE



Human FGL2 on Bis-Tris PAGE under reduced condition. The purity is greater than 90%.

### SEC-HPLC

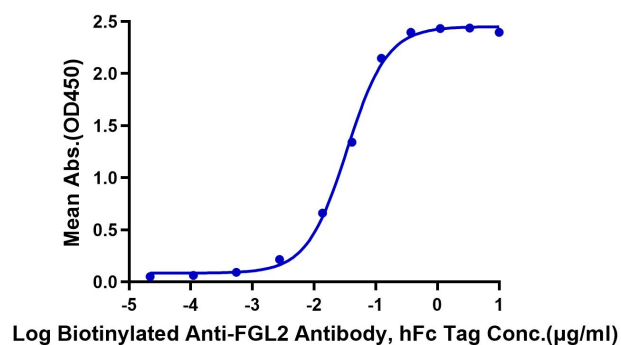


The purity of Human FGL2 is greater than 90% as determined by SEC-HPLC.

Assay Data

ELISA Data

**Human FGL2, hFc Tag ELISA**  
0.1µg Human FGL2, hFc Tag Per Well



Immobilized Human FGL2, hFc Tag at 1µg/ml (100µl/Well) on the plate. Dose response curve for Biotinylated Anti-FGL2 Antibody, hFc Tag with the EC50 of 34.3ng/ml determined by ELISA.